

**LZTS1 Antibody (N-term)**  
**Affinity Purified Rabbit Polyclonal Antibody (Pab)**  
**Catalog # AP13069a**

**Specification**

---

**LZTS1 Antibody (N-term) - Product Information**

Application	WB,E
Primary Accession	<a href="#">O9Y250</a>
Other Accession	<a href="#">NP_066300.1</a>
Reactivity	Human, Mouse
Host	Rabbit
Clonality	Polyclonal
Isotype	Rabbit IgG
Calculated MW	66613
Antigen Region	77-105

**LZTS1 Antibody (N-term) - Additional Information**

**Gene ID** 11178

**Other Names**

Leucine zipper putative tumor suppressor 1, F37/esophageal cancer-related gene-coding leucine-zipper motif, Fez1, LZTS1, FEZ1

**Target/Specificity**

This LZTS1 antibody is generated from rabbits immunized with a KLH conjugated synthetic peptide between 77-105 amino acids from the N-terminal region of human LZTS1.

**Dilution**

WB~~1:1000

E~~Use at an assay dependent concentration.

**Format**

Purified polyclonal antibody supplied in PBS with 0.09% (W/V) sodium azide. This antibody is purified through a protein A column, followed by peptide affinity purification.

**Storage**

Maintain refrigerated at 2-8°C for up to 2 weeks. For long term storage store at -20°C in small aliquots to prevent freeze-thaw cycles.

**Precautions**

LZTS1 Antibody (N-term) is for research use only and not for use in diagnostic or therapeutic procedures.

**LZTS1 Antibody (N-term) - Protein Information**

**Name** LZTS1

## Synonyms FEZ1

**Function** Involved in the regulation of cell growth. May stabilize the active CDC2-cyclin B1 complex and thereby contribute to the regulation of the cell cycle and the prevention of uncontrolled cell proliferation. May act as a tumor suppressor.

## Cellular Location

Cytoplasm. Cell membrane. Cell projection, dendritic spine Postsynaptic density. Synapse  
Note=Associated with the plasma membrane and with microtubules Detected in dendritic spines, especially in the postsynaptic density (By similarity).

## Tissue Location

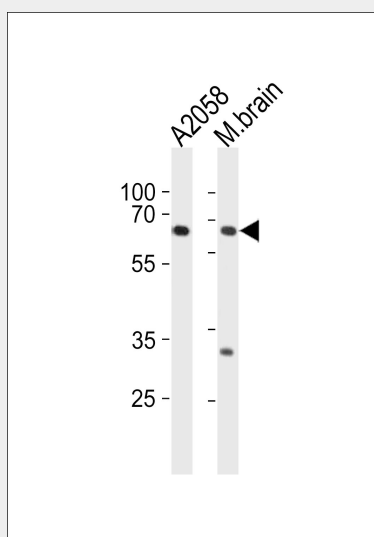
Highly expressed in testis, prostate, spleen, thymus, ovary and brain. Detected at lower levels in heart, placenta, small intestine, colon, liver, kidney, skeletal muscle and pancreas Not detectable in primary tumors from breast and prostate and in many cancer cell lines.

## LZTS1 Antibody (N-term) - Protocols

Provided below are standard protocols that you may find useful for product applications.

- [Western Blot](#)
- [Blocking Peptides](#)
- [Dot Blot](#)
- [Immunohistochemistry](#)
- [Immunofluorescence](#)
- [Immunoprecipitation](#)
- [Flow Cytometry](#)
- [Cell Culture](#)

## LZTS1 Antibody (N-term) - Images



LZTS1 Antibody (N-term) (Cat. #AP13069a) western blot analysis in A2058 cell line and mouse brain tissue lysates (35ug/lane). This demonstrates the LZTS1 antibody detected the LZTS1 protein (arrow).

## LZTS1 Antibody (N-term) - Background

This gene encodes a tumor suppressor protein that is ubiquitously expressed in normal tissues. In uveal melanomas, expression of this protein is silenced in rapidly metastasizing and metastatic tumor cells but has normal expression in slowly metastasizing or nonmetastasizing tumor cells. This protein may have a role in cell-cycle control by interacting with the Cdk1/cyclinB1 complex. This gene is located on chromosomal region 8p22. Loss of heterozygosity (LOH) in the 8p arm is a common characteristic of many types of cancer.

#### **LZTS1 Antibody (N-term) - References**

Olson, J.E., et al. Breast Cancer Res. Treat. (2010) In press :  
Chattopadhyay, I., et al. Mutat. Res. 696(2):130-138(2010)  
Califano, D., et al. J. Cell. Physiol. 222(2):382-386(2010)  
Shyn, S.I., et al. Mol. Psychiatry (2009) In press :  
Canova, C., et al. Cancer Res. 69(7):2956-2965(2009)